

SHOWHOUSE TOUR

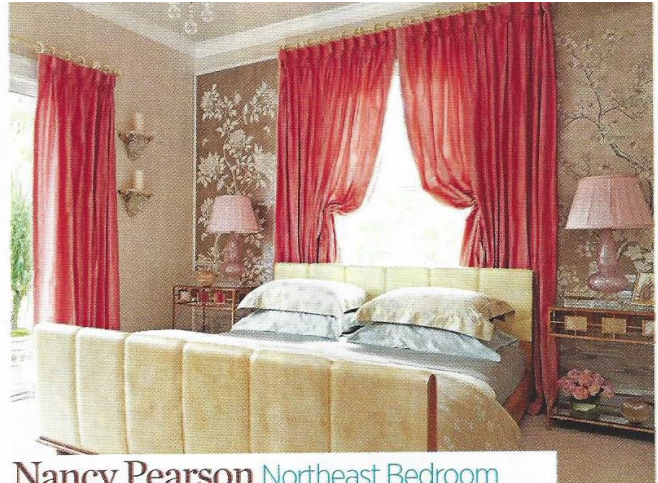
Joseph Fava Master Bedroom

Welcome to a master suite where Hollywood glamour meets midcentury chic. "The room lacked drama," Fava says. "I wanted to make it unexpected." Metallic vinyl wallpaper—its texture reads like Thai silk—teams with lacquered trim and high-gloss vinyl on the ceiling to add height. Vintage Saporiti chairs in silvery velvet in the sitting room are Fava's favorites. "I also love the John Lyle chrome consoles and Jan Showers lamps; they are works of art," he says. The nickel-and-glass chandelier, acrylic cocktail table, and platinum settee stick to the scheme of blues, grays, and silvers.



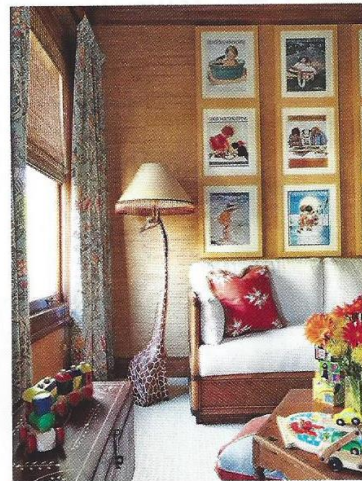
Katherine Shenaman Southwest Bedroom

Colorful John Robshaw bedding from Pioneer Linens motivated Shenaman to think outside the box when designing this bedroom. "The carved bed complemented the character and feel of the linens, each evoking something old-world and soulful," she says. Her layered look overlaps two patterned area rugs atop wall-to-wall sea-grass floor covering, all from Stark Carpet. An iron bench offers seating with great outdoor views.



Nancy Pearson Northeast Bedroom

"It was fun to do a strictly feminine space for a change," says Pearson, who envisioned a modern-day Zelda Fitzgerald occupying this lavish bedroom. A floral wall covering provides texture, while yards upon yards of salmon silk taffeta from Scalamantré decorate the windows. Pretty pink lamps perched on top of gilded end tables with crystal inserts and mirrored tops flank the bed's low-profile parchment-covered head and footboard with pearwood side rails. Fluffy pillows, luxe bedding, and a plush down comforter from Pioneer Linens guarantee a good—and glamorous—night's sleep. Sliding glass doors open to a private terrace.



Mimi Masri Child's Nursery

This nursery doesn't just foster imagination, it's functional, too. "I designed the room to grow with a child from birth through the early teenage years, needing only minimal changes," Masri explains. Framed *Good Housekeeping* prints over the sofa, which doubles as a daybed, portray youthful moments that stimulate curiosity and exude innocence. Lighthearted accessories like the giraffe floor lamp add personality. 🐘

2013 American Red Cross Designers' Showhouse

For the third year, *Traditional Home* is proud to sponsor the 2013 American Red Cross Designers' Showhouse in West Palm Beach, Florida. Located at 123 Santa Lucia Drive, the showhouse features 16 designers' interpretations of tropical island living. It is open daily now through February 23. For more information, call 561/650-9133 or visit redcrossshowhouse.com.

Special Thanks to Our 2012 Sponsors

Bacardi, Fairfax & Sammons, Gulfstream Media Group, Kaufmann de Suisse, Mary.K. Oxley Foundation, Pioneer Linens, Pratt & Lambert, Quigley Maguire Collections, Regions Bank, Store Self Storage & Wine Storage, and Susan O. Taylor